

Ashtree Avenue Mitcham, CR4 3DS

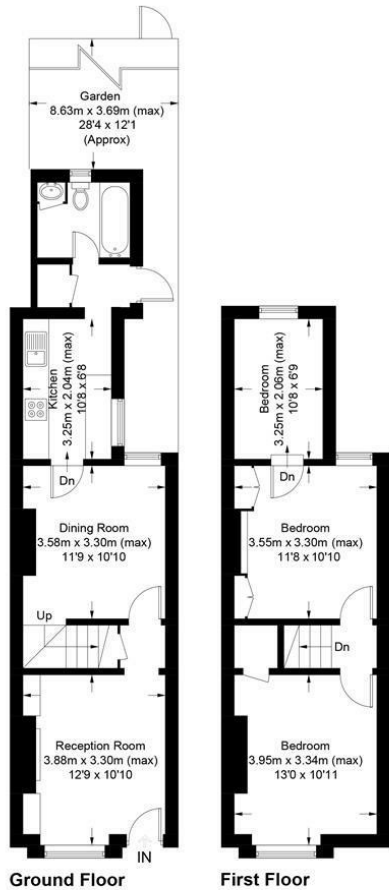
£460,000 Freehold



A beautifully presented two/three bedroom period family home located on a sought after road close to both Tube and Tram links with great amenities nearby. Comprising of two receptions with plantation shutters, oak flooring and feature fireplace, modern fitted kitchen with utility cupboard and direct access to the private rear garden. Modern bathroom, two double bedrooms and a third that could be used as a nursery or home office. This lovely period home could also be extended via the loft void to create a further bedroom and bathroom subject to the usual planning permissions. Properties of this quality are rare to the market so we urge you to book viewings early to avoid disappointment.

Ashtree Avenue, CR4

Approximate Gross Internal Area = 78.2 sq m / 842 sq ft

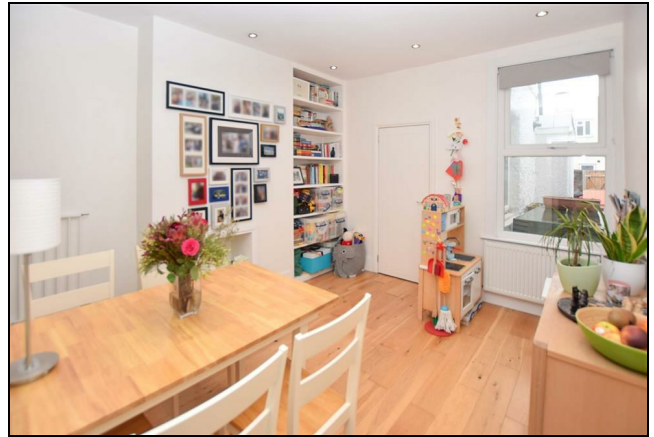


This floor plan is for representation purposes only and is not drawn to scale.

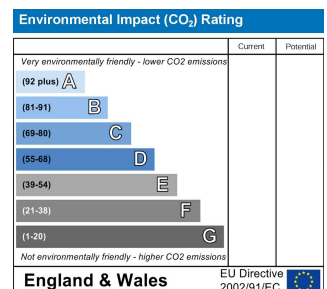
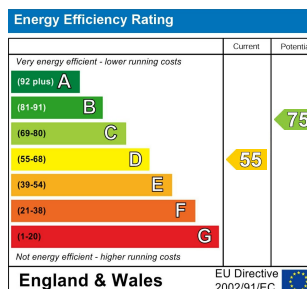
The Gross Internal Area includes outbuildings shown on the plan.

Whilst every attempt has been made to ensure the accuracy of the plan measurements of doors, windows and rooms are approximate only and should be checked before making any decisions reliant upon them.

Copyright Bespokeplans.co.uk (ID802867)



- Two/Three Bedroom
- Period Family Home
- Beautifully Presented
- Private Rear Garden
- Close To Tube Station and Tram Links
- Sought After Location
- Great Amenities Nearby
- EPC Rating : D



For Free Mortgage Quote and Best Mortgage Rates, call an Ellisons Mortgage Advisor on 020 8544 0518



Although these particulars are believed to be correct, their accuracy is not guaranteed and they do not form part of any contract.

Celebrating 30 years of successful Sales and Lettings in Merton

